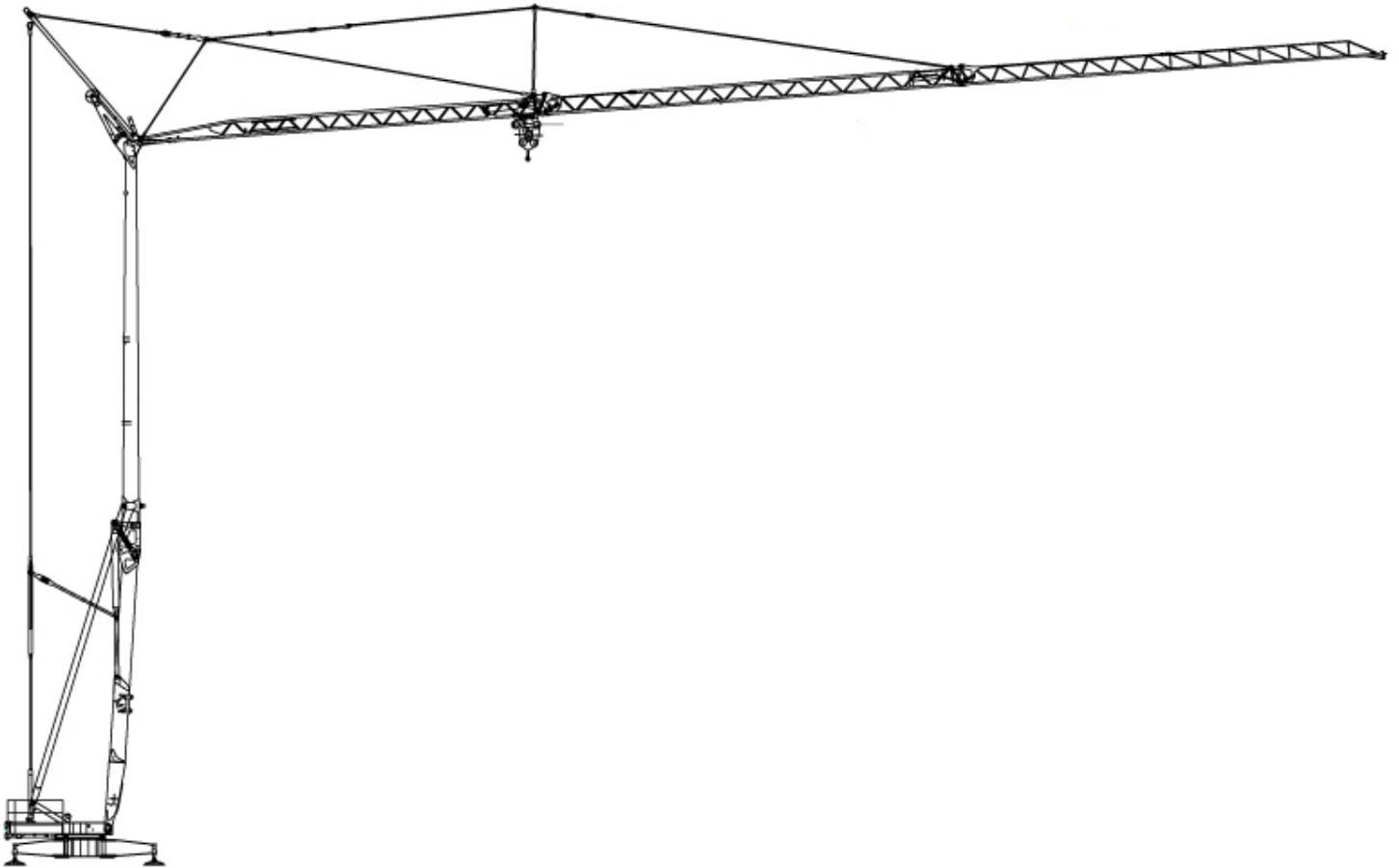
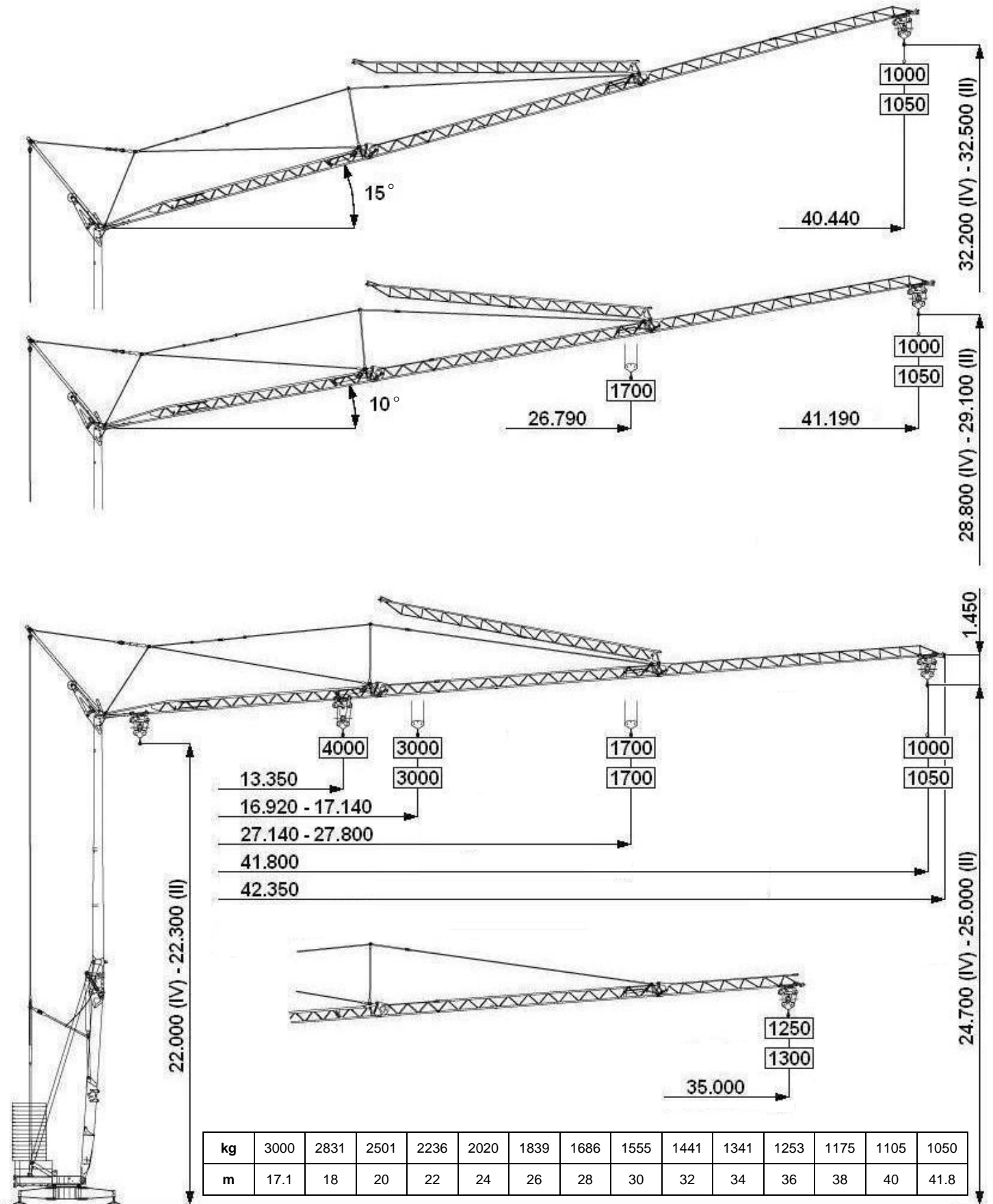


VANSON VC 42

Hydraulic Self-Erecting Crane


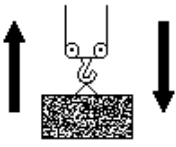
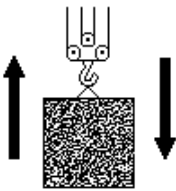
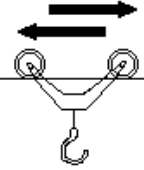
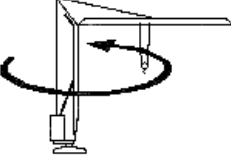
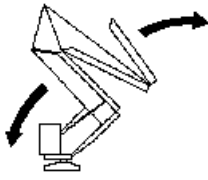



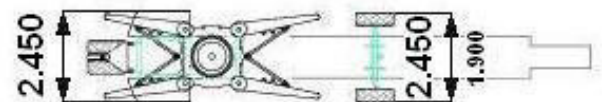
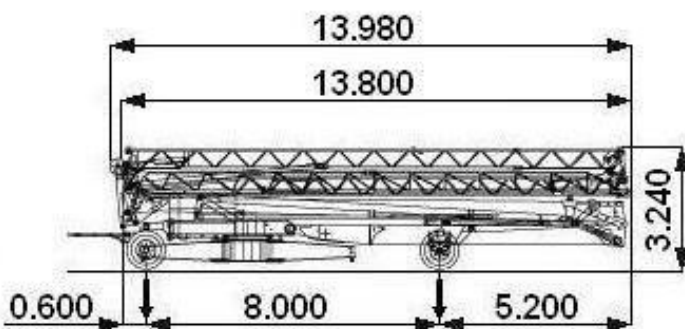
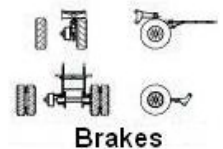
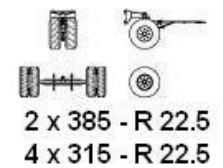
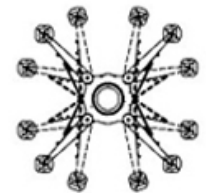
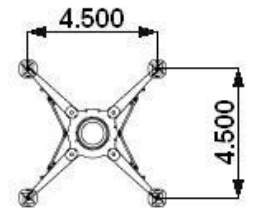
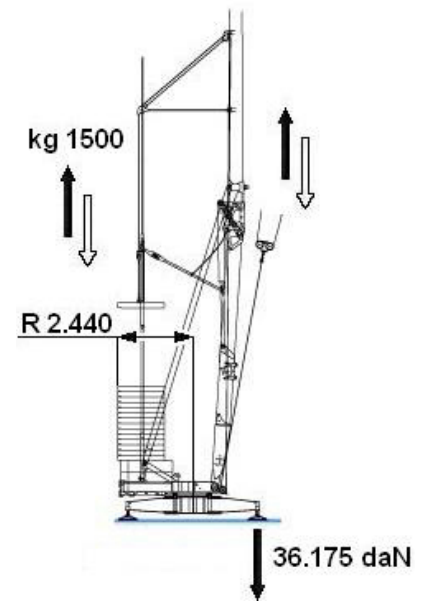
VANSON VC 42



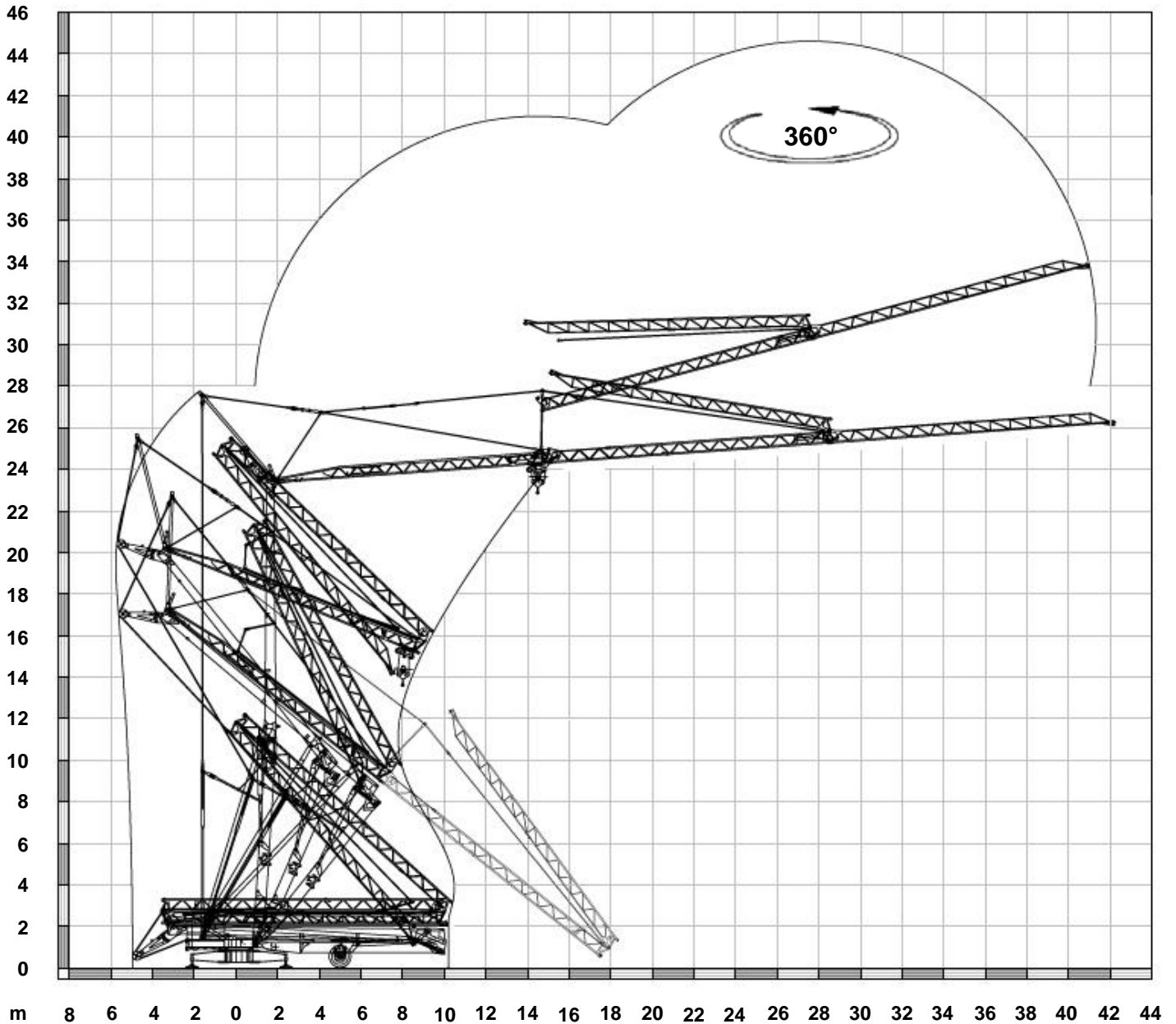
| | | | | | | | | | | | | | | | | |
|----|------|------|------|------|------|------|------|------|------|------|------|------|------|------|------|------|
| kg | 4000 | 3775 | 3209 | 2784 | 2454 | 2188 | 1971 | 1790 | 1637 | 1505 | 1391 | 1292 | 1204 | 1125 | 1055 | 1000 |
| m | 13.3 | 14 | 16 | 18 | 20 | 22 | 24 | 26 | 28 | 30 | 32 | 34 | 36 | 38 | 40 | 41.8 |

VANSON VC 42

| | | | | | | | | | |
|---|------------------------------|------------------------|-------------|--------------|----------|--|--|--|--|
|  | 400 V (+ 10% - 10%) 50 Hz | | | | 12kVA | | | | |
|  | | ▶ | ▶▶ | ▶▶▶ | ▶▶▶▶ | | | | |
| | m/l' | 8 | 20 | 46 | 56 | | | | |
| | kg | 3000 | 3000 | 1200 | 800 | | | | |
| | kW | 11 (Inverter) | | | | | | | |
|  | | ▶ | ▶▶ | ▶▶▶ | ▶▶▶▶ | | | | |
| | m/l' | 8 - 4 | 20 - 10 | 46 - 23 | 56-28 | | | | |
| | kg | 2000 - 4000 | 2000 - 4000 | 1200 - 2400 | 800-1600 | | | | |
| | kW | 11 (Inverter) | | | | | | | |
|  | | ▶ | ▶▶ | ▶▶▶ | | | | | |
| | m/l' | 17.3 | 28.6 | 53.5 (139.3) | | | | | |
| | kW | 3 (Inverter) | | | | | | | |
|  | | ▶ | ▶▶ | ▶▶▶ | | | | | |
| | g/l' | 0.27 | 0.54 | 0.75 | | | | | |
| | kW | 3 (Inverter) | | | | | | | |
|  | | ▶ | | | | | | | |
| | min | 14 | | | | | | | |
| | kW | 3 | | | | | | | |
|  | kg | 18750 + (8100 + 19500) | | | | | | | |



VANSON VC 42



STANDARD FEATURES

4-speed lifting, 3-speed rotation and trolley with inverter control, galvanised structure, counterweight, pull-up jib, trolley with motor and limit switch at base of crane, operation with folded jib, radio remote control, emergency cable-operated control, guard for slewing ring and mechanisms, designed to allow installation of self-ballasting device, stainless steel electrical cabinet, documentation in accordance with EU standards.

VANSON CRANES LIMITED

Honey Pot Lane, Colsterworth, Grantham, Lincolnshire. NG33 5LY.
Telephone: +44 (0) 1476 861011 Fax: +44 (0) 1476 861014
E-mail: sales@vansoncranes.com Website: www.vansoncranes.com

February 2007